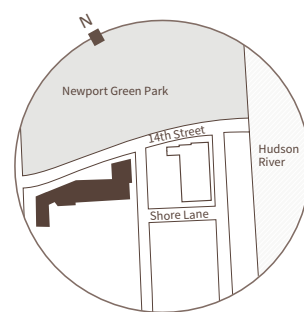
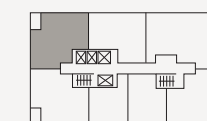


# 35 PARK LANE

RESIDENCE

## 2501

1,195 sq. ft. / 111.0 m<sup>2</sup>  
2 bedrooms / 2 bathrooms  
private balcony / 80 sq. ft.



### BUILDING AMENITIES:

- Wine Tasting Lounge with Private Dining Room
- 25-meter Olympic Lap Pool & Fitness Center
- Lounge with Co-working spaces
- Multimedia Lounge
- Sky Lounge with full-service kitchen, grill & bar, and incredible skyline views
- Outdoor Putting Green
- Children's Play Area
- Game Room and Golf Simulator

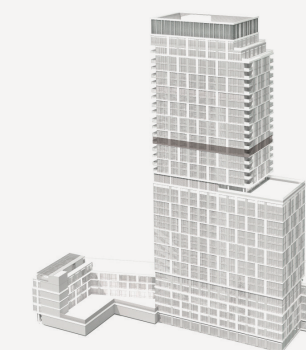
### RESIDENCE FEATURES:

- Madreperola Quartzite stone countertop and full height backsplash
- Appliances by Bosch and Broan
- Walnut custom cabinetry vanity
- Arctic White marble master bath
- Glacier White Quartz vanity countertop
- Kohler Purist showers
- White oak flatsawn wood flooring
- Movable kitchen table with walnut cabinets and madreperola quartzite stone top

Scale | 1 | 5 | 10 |

Developer: Strategic Capital  
Design Architect: Woods Bagot  
Exclusive Marketing and Sales Agent:  
The Marketing Directors, Inc.

Sales Gallery: 100 Town Square Place,  
Jersey City, NJ 07310  
Website: parkandshore.com



The units or interests in the development are offered to the public and are sold or alienated without regard to marital status, sex, race, color, creed, religious principles, national origin, ancestry, affectional or sexual orientation, or any other basis prohibited by the Law Against Discrimination (N.J.S.A.10:5-1 et seq.).

The artist representation of the building and any description or depiction of interior decorations, finishes, appliances and furnishings contained herein are provided for illustrative purposes only and may be modified, altered or changed. The complete offering terms are in the Public Offering Statement available from Sponsor. Sponsor makes no representation or warranties except as may be set forth in the Public Offering Statement and Purchaser acknowledges and agrees that it has relied only on the terms of the Public Offering Statement.